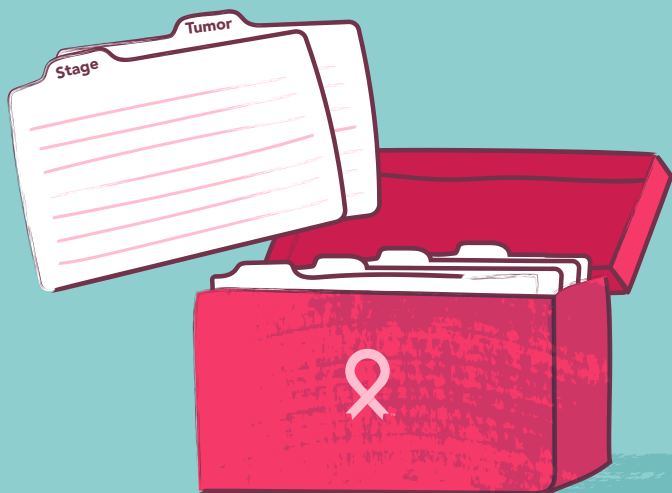


Glossary of Common Breast Cancer Terms





Introduction

No matter the stage or circumstance, hearing the words, “You have breast cancer,” is overwhelming and stressful to so many women. Adding to this new and already complex situation, a breast cancer diagnosis often comes with complicated medical jargon, terms, and words that may not be familiar to someone who doesn’t have a background in medicine.

To help alleviate stress and fear of the unknown, we have compiled a breast cancer glossary of more than 60 terms related to breast cancer. We hope these simplified definitions of common terms will equip you with the knowledge you need and empower you as you make decisions about your care.

If you are a breast cancer patient, we encourage you to take this glossary with you to your appointments as you seek clarity for your diagnosis and what’s ahead. We also invite loved ones of patients to refer to this glossary when discussing breast cancer care with your friend or family member.

Disclaimer: This glossary is not an exhaustive list of terms you may encounter while undergoing a breast cancer diagnosis and treatment. Always refer any questions related to breast cancer and its treatment to your healthcare team.

Table of Contents

Glossary of Common Breast Cancer Terms (in alphabetical order).	4
Additional Resources	14
eBooks and Guides	14
Webpages	14

Glossary of Common Breast Cancer Terms (in alphabetical order)

- **Benign:** A tumor that is not cancerous or malignant.
- **BRCA:** An abbreviation for “BReast CAncer” gene mutation. There are two types of BRCA gene mutations that have been found to impact a person’s chances of developing breast cancer: BRCA1 and BRCA2.
- **Biopsy:** A medical test that removes a sample of tissue or fluid from a suspicious area. The removed sample is examined in a laboratory to check for the presence of cancer or other abnormalities.
- **Chemotherapy:** A cancer treatment method that uses a combination of drugs to either destroy cancer cells or slow down the growth of cancer cells. Chemotherapy is a systemic therapy, meaning that the drugs travel in the bloodstream throughout the entire body. Chemotherapy can be given in the form of an IV (infusion) therapy or as an oral (pill) therapy. The method of receiving the treatment is unrelated to its effectiveness.
- **Chemo brain:** A common term used by cancer patients and survivors to describe the potential side effects of chemotherapy, including brain fog, cognitive impairment or dysfunction, or thinking or memory problems that can occur during and after cancer treatment.
- **Dense breasts:** Breast tissue with a high concentration of fibroglandular tissue. Dense breast tissue is a [risk factor](#) for developing breast cancer and can make mammograms more difficult to read.
- **Docetaxel:** A type of chemotherapy called a taxane. Docetaxel is often used to treat breast, lung, prostate, stomach, and head and neck cancers. It works to stop the growth of cancer cells by blocking cell division.

- **Ductal carcinoma in situ (DCIS):** An early and non-invasive type of breast cancer where abnormal cells have been found in the lining of the breast milk ducts, where the abnormal cells have not spread outside of the ducts. DCIS is [Stage 0](#) breast cancer, meaning that the cancer is non-invasive and has not spread beyond the original site of the cancerous growth.
- **Grade:** Breast cancer cells are assigned a level, or a grade, after they are removed from the breast and studied in a lab. A cancer's grade is used to help predict the outcome (prognosis) of the disease and to determine what treatments might work best. The assigned grade (Grade 1-3) is based on how much the cancer cells look like normal cells.
 - » **Grade 1 (low):** The cancer is slower-growing and less likely to spread.
 - » **Grade 2 (intermediate):** The cancer is growing faster than Grade 1 cancer but slower than Grade 3 cancer.
 - » **Grade 3 (high):** The cancer is faster-growing and is more likely to spread.
- **Herceptin:** A drug that can be used to treat HER2-positive breast cancer that is early-stage, advanced-stage, or metastatic. The chemical name for Herceptin is trastuzumab.
- **HER2:** HER2 stands for "human epidermal growth factor receptor 2." HER2 proteins are found on the surface of breast cells and are involved in normal cell growth. If a person's HER2 protein levels are higher than usual, or overexpressed, it can cause cancer to grow and spread more quickly.
 - » **HER2-positive and HER2-low:** If breast cancer cells have abnormally high levels of HER2 proteins, the breast cancer is considered HER2-positive (elevated levels of HER2 proteins) or HER2-low (slightly elevated

levels of HER2 proteins). HER2-positive and HER2-low breast cancers can cause the cancer cells to multiply and spread more quickly. HER2-positive and HER2-low breast cancers are primarily treated with biologic targeted therapy, such as Herceptin.

- » **HER2-negative:** If breast cancer cells do not have elevated levels of HER2 proteins, the breast cancer is considered HER2-negative. HER2-negative breast cancer is not treated with biologic targeted therapy. Depending on the size of the tumor, hormone receptors, and other factors, it might be treated with chemotherapy.
- **Hormonal therapy:** A type of drug therapy that keeps breast cancer cells from receiving or using the natural female hormones in the body (estrogen and progesterone) which they need to grow. Hormonal therapy also blocks the ability of healthy breast cells to receive hormones that could stimulate breast cancer cells to regrow in the form of recurrence of the breast cancer within the breast or elsewhere in the body. Hormonal therapy is not considered an applicable treatment for triple-negative breast cancer.
- **In situ:** Latin for “in the original place.” The earliest stage of cancer is called “carcinoma in situ,” or “cancer in the original place,” meaning it has not spread from the original location.
- **Inflammatory breast cancer (IBC):** A rare and aggressive type of breast cancer, IBC occurs when cancer cells infiltrate the skin and lymph vessels of the breast. IBC is harder to diagnose than other types of breast cancer and tends to occur in younger women. It also spreads more quickly than other types of breast cancer. IBC is classified as [Stage 3](#) breast cancer since it includes cancer of the skin of the breast. If the cancer has spread outside of the breast and skin to other organs of the body, it is classified as [Stage 4](#) breast cancer.

- **Infusion:** The slow injection of a substance into a vein or tissue. Chemotherapy, biologic targeted therapy, and immunotherapy are generally delivered through an infusion, or an injection of the drugs into the body.
- **Invasive ductal carcinoma (IDC):** Invasive breast cancer where abnormal cancer cells that began forming in milk ducts have spread beyond the ducts into other parts of the breast tissue. IDC is the most common type of breast cancer, making up 70-80% of all breast cancer diagnoses.
- **Invasive lobular cancer (ILC):** Invasive breast cancer that begins in the lobules (milk glands) of the breast and spreads to surrounding normal tissue. It can also spread through the blood and lymph systems to other parts of the body. ILC is the second most common type of breast cancer, accounting for 12-15% of breast cancer diagnoses.
- **Lobular carcinoma in situ (LCIS):** LCIS is not breast cancer. It is a condition where abnormal cells are found in the lobules of the breast. The atypical cells have not spread outside of the lobules into the surrounding breast tissue. LCIS is a marker for increased risk of getting breast cancer in the future. Someone with LCIS found on a breast biopsy might be followed in a high-risk clinic as well as receive a hormonal therapy drug, like Tamoxifen, to reduce their risk.
- **Lumpectomy:** A surgical treatment for breast cancer in which the primary breast cancer tumor and a margin of healthy tissue around the tumor is removed, but not the entire breast itself. Lumpectomy may be used in conjunction with other treatments, such as chemotherapy or radiation.
- **Lymphedema:** A chronic condition that is caused by a disruption or damage to the normal drainage pattern in the lymph nodes. It most often causes swelling of

the arm, but it can also affect the breast, chest, and sometimes even the legs. Removing the axillary lymph nodes as part of breast cancer treatment increases your risk for developing lymphedema.

- **Malignant:** A tumor that is cancerous.
- **Mammogram:** Used for the early detection or the diagnosis of breast cancer, a mammogram is an x-ray of the breast that allows a qualified specialist to examine the breast tissue for any suspicious areas. There are two types of mammograms:
 - » **Screening mammogram:** A screening mammogram is the gold standard for the early detection of breast cancer and is routinely performed to detect breast cancer in women who have no apparent symptoms of breast cancer.
 - » **Diagnostic mammogram:** A diagnostic mammogram is a more detailed mammogram and is used if there are suspicious results on a screening mammogram or if [signs and symptoms of breast cancer](#) are present.
- **Mastectomy:** A surgical treatment for breast cancer in which tissue is removed from one or both breasts. Mastectomy may be used in conjunction with other treatment options, such as chemotherapy or radiation. Those at [high genetic risk](#) for breast cancer may choose to have a preventative (prophylactic) mastectomy before cancer has a chance to develop. There are different types of mastectomies:
 - » **Total simple mastectomy:** Surgical removal of the entire breast, including the breast tissue, nipple, areola, sentinel lymph node, and breast skin.
 - » **Skin-sparing mastectomy:** Surgical removal of the breast tissue, nipple, areola and sentinel lymph node. This type leaves the breast skin intact for surgical breast reconstruction.

- » **Nipple-sparing mastectomy:** Surgical removal of the breast tissue like the skin-sparing mastectomy but also preserves the nipple and areola.
- » **Modified radical mastectomy:** Surgical removal of the entire breast, nipple, areola, and axillary lymph nodes, but often leaves the chest wall intact.
- » **Double (or bilateral) mastectomy:** Surgical removal of both breasts.
- » **Unilateral mastectomy:** Surgical removal of one breast.
- **Metastatic breast cancer (MBC):** Classified as [Stage 4 breast cancer](#), metastatic breast cancer occurs when breast cancer has spread, or metastasized, to other parts of the body, such as the lungs, liver, bones, or brain. Although MBC is not curable, it is treatable, with more and more women living longer by managing the disease as a chronic illness with a focus on quality of life as a primary goal.
- **Oncotype DX breast cancer assay:** A lab test that is used to help predict whether breast cancer will come back or spread to other parts of the body. Also called 21-gene signature.
- **Palliative care:** Specialized medical care that focuses on the management of symptoms or side effects that are disruptive to a patient's quality of life. It is designed for those who have a serious, life-threatening, or terminal illness but does not replace the patient's primary treatment. The goal of palliative care is to either restore or preserve quality of life.
- **PET scan:** Positron emission tomography, or PET scan, is an imaging test that uses a radioactive substance, called a tracer, to check for the spread of breast cancer throughout the body. The tracer helps identify areas that may not be visible on an MRI or CT scan.

- **Preventative (or prophylactic) mastectomy:** The surgical removal of both breasts before cancer has a chance to develop or spread in women with high-risk [BRCA gene mutations](#).
- **Prognosis:** A doctor's prediction of the course and outcome of a medical condition, such as cancer.
- **Radiation:** A type of breast cancer treatment that uses high-energy rays to kill cancerous cells. It affects cells only in the part of the body receiving the radiation.
- **Reconstruction:** Surgery to recreate the breast(s) after mastectomy. Some types of reconstruction use breast implants, while others may use fatty tissue from your own body (such as the stomach, buttocks, or inner thigh) to form a breast. Reconstruction may be performed at the same time as a mastectomy or may occur months or years later. There are multiple options for breast reconstruction:
 - » **Two-stage reconstruction:** A surgical procedure in which a breast is rebuilt after a mastectomy in two steps: 1) a tissue expander is surgically placed in the mastectomy cavity to gradually stretch the skin, and 2) the expander is removed and replaced with a breast implant.
 - » **Single-stage reconstruction:** Also called direct to implant, single-stage reconstruction is when a surgeon places a breast implant immediately after a mastectomy.
 - » **DIEP (deep inferior epigastric perforator) flap:** A surgical procedure in which abdominal fat is used to sculpt the tissue into the shape of a breast.
 - » **Latissimus dorsi flap:** Muscle and fat located below the shoulder blade is surgically removed and used to fill the mastectomy cavity.

- » **Aesthetic flat closure:** A surgical procedure that removes or rearranges excess breast skin and fat after a mastectomy to produce a smooth, flat chest wall contour. No implant is used.
- **Recurrence:** When breast cancer returns after completion of initial treatments.
 - » **Local recurrence:** Breast cancer returns in the same breast as the original tumor.
 - » **Regional recurrence:** Breast cancer returns near the original site, in lymph nodes in the armpit or collarbone.
 - » **Distant recurrence:** Breast cancer returns or spreads away from the original tumor to other parts of the body, such as the bones, lungs, liver, or brain. [Metastatic breast cancer](#) (MBC), or [Stage 4](#) breast cancer, is a distant recurrence of breast cancer.
- **Red devil:** Chemotherapy drug doxorubicin is commonly referred to as the “red devil” due to its distinctive red color and because it may cause serious side effects, such as hair loss, nausea, and vomiting, in patients.
- **Stage:** Breast cancer stage is based on the size and location of the primary tumor and whether or not it has spread. There are multiple stages of breast cancer:
 - » **Stage 0:** The earliest stage of breast cancer. Stage 0 is non-invasive, meaning it hasn’t spread outside of its original location in the breast tissue, and is highly treatable when detected early.
 - » **Stage 1:** The earliest stage of what is considered invasive breast cancer, meaning the cancer is no longer contained in its original location because it has spread to, or invaded, other areas of the body. Stage 1 breast cancer is classified into two categories—Stage 1A or Stage 1B—based on the size of the

tumor and whether it is only in the breast tissue or has spread to the lymph nodes. Stage 1 breast cancer is considered early-stage cancer is highly treatable and survivable.

- » **Stage 2:** The breast cancer is growing, but it is still contained in the breast or growth has only extended to the nearby lymph nodes. Stage 2 breast cancer has two groups—Stage 2A or Stage 2B—depending on the size and location of the cancerous growth.
- » **Stage 3:** The breast cancer has extended beyond the immediate region of the tumor and may have invaded nearby lymph nodes and muscles, but has not spread to distant organs. Stage 3 breast cancer is divided into three groups—Stage 3A, 3B, or 3C—depending on the size of the tumor and whether the cancer has spread to the lymph nodes and surrounding tissue. Although this stage is considered to be advanced, there are a growing number of effective treatment options.
- » **Stage 4:** The cancer has spread, or metastasized, to other areas of the body, such as the brain, bones, lungs, or liver. Stage 4 breast cancer is also known as [metastatic breast cancer](#).
- **Tamoxifen:** A hormone therapy drug that can prevent the original breast cancer from returning and can also help prevent the development of new breast cancers in the other breast or elsewhere in the body in the future. It is usually taken for a time period of 5 years after treatment for breast cancer.
- **Targeted therapy:** Also called biologic targeted therapy, a breast cancer treatment method that uses drugs to target specific proteins on cancer cells that may help them grow or spread. Targeted drugs work to destroy or slow down cancerous cell growth.

- **Thriver:** A term commonly used by metastatic breast cancer patients to describe themselves. “Thriver” is often used instead of “survivor” in the MBC community.
- **Triple-negative breast cancer (TNBC):** A type of breast cancer in which the three most common types of receptors known to fuel most breast cancer growth—estrogen, progesterone, and the HER-2/neu gene—are not present in the cancer tumor. Hormone therapy is not effective for TNBC, with the preferred treatment option being chemotherapy.
- **Tumor:** A mass of abnormal tissue. A tumor can be benign (non-cancerous) or malignant (cancerous).
- **Ultrasound:** A scan that uses penetrating sound waves that do not affect or damage the tissue and cannot be heard by humans. Ultrasound is used to investigate a suspicious area detected in the breast.

Use the space below to write down any new words or terms that you want to keep track of.

Additional Resources

In addition to this breast cancer glossary, National Breast Cancer Foundation offers dozens of free resources to help educate and encourage those facing breast cancer. Below are specific free resources that may be useful as you learn about breast cancer.

eBooks and Guides

[Just Diagnosed with Breast Cancer... Now What?](#)

[Dense Breast Q&A Guide](#)

[Breast Cancer Surgery eBook](#)

[Breast Cancer Recurrence eBook](#)

[Most Asked Questions About Breast Cancer Recurrence](#)

Webpages

[What is Breast Cancer?](#)

[Breast Cancer Stages](#)

[Types of Breast Cancer](#)

[Breast Cancer Treatment](#)

More free educational resources
can be found at nbcf.org.